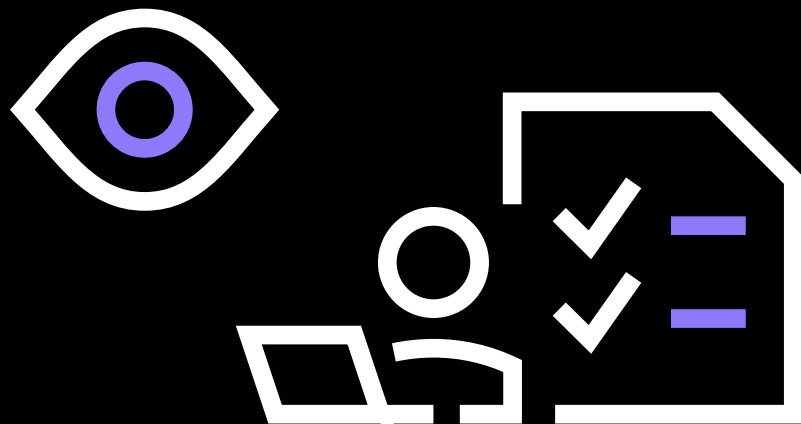


# Simplifying network visibility and troubleshooting

How Auvik improves responsiveness,  
configuration access, and clarity  
across a campus network





## “...great visibility into my network devices”

### Key points

- Auvik provides near real-time network visibility and centralized device configuration backups
- The clear network map and integrated alarm station simplify troubleshooting
- Pulling configurations accelerates switch replacements and port issue diagnosis
- SNMP credentials and remote terminal access are seamlessly managed
- Auvik minimizes setup and maintenance time, streamlining IT operations

### What is your primary use case for Auvik?

As the IT manager for our two-building campus, I collaborate closely with our Managed Service Provider to leverage Auvik Network Management for comprehensive monitoring of our network infrastructure, including switches, firewalls, access points, and other typical small business network devices.

We chose Auvik Network Management to gain better visibility into our network, with real-time alerts for any device going offline, while also providing a centralized location for backing up all our device configurations.

### How has Auvik helped your organization?

While the dynamic map's initial behavior took some getting used to, the UI itself is fairly straightforward. Once I figured out the filters and other controls, I've found it to be quite user-friendly.

The clear network map with hover-over information for nodes and connections has been a big help. It not only visualizes the network layout but also provides details on how the connections function. Auvik's insights helped in pinpointing my VLAN misconfiguration earlier on, making troubleshooting a breeze.

Auvik allows us to spend less time on the setup, maintenance, and issue resolution. Pulling switch configurations simplifies tasks like replacing equipment or troubleshooting. Having the configuration readily available allows us to see things like traffic patterns, which can help pinpoint issues like port misconfigurations, without needing to delve into switch menus and trace information through tables.



**Auvik allows us to spend less time on setup, maintenance, and issue resolution.”**

**—Jonah S., IT Manager,  
American Swedish Institute**

### What is most valuable about Auvik?

I love that Auvik manages all of the credentials for me. It's incredibly convenient to have both SNMP monitoring and remote terminal access available through the web interface, no matter where I am. This gives me great visibility into my network devices.



**The network map and dashboard offer full visibility of our entire network's health.”**

**-Jonah S., IT Manager,  
American Swedish Institute**

### How long have you used Auvik?

I have been using Auvik Network Management for two and a half years.

### What do you think about the stability of Auvik?

Auvik Network Management is a reliable system with occasional minor login issues that occur infrequently.

### What do you think about the scalability of Auvik?

Auvik has responded fairly well as we've made changes to our network, but we haven't grown rapidly enough to see it try to scale.

### How was Auvik's initial setup?

While I wasn't part of the initial network setup, I'm familiar with adding and modifying devices. Luckily, Auvik seems to catch these changes automatically.

### Any final thoughts about Auvik?

I would rate Auvik Network Management eight out of ten.

Auvik is generally low-maintenance. While I occasionally verify switch imports and credentials when adding new devices, I haven't encountered any need for regular, active maintenance of the product itself.

Auvik Network Management offers filtering views and adjustable time scales, which are valuable features once you discover them. Additionally, you can manually add devices that the discovery tool misses, such as unmanaged switches, for full network visibility. This covers most of your visibility needs.

Read the full review on [Peerspot.com](https://peerspot.com)

# Want to experience Auvik for yourself?

**Start your 14-day trial**